

# YMCA CHRISTCHURCH 2019



**Investing in the Next Generation**  
Reanga mō muri hāpaitia





## From the YMCA Board of Trustees

### Jon Purdue (President)

2018 has been another busy year for the Christchurch YMCA as we continue to invest in the next generation.

In December we celebrated the opening of the 4C Centre by the Minister of Youth Development – Hon. Peeni Henari. The Todd Foundation has generously donated \$1 million to this world leading technology centre for youth. There are many others who support our work with young and often vulnerable people for which we are very grateful – the more support we receive the more we can achieve. In particular we would like to acknowledge the Rata Foundation's ongoing support of our work, they are consistent believers in what we do.

The YMCA is a voluntary organisation – thank you sincerely to my colleagues on the Y's

voluntary board working behind the scenes, and the hundreds of young volunteers delivering our programmes at the coalface. These volunteers are the heart of our mission, purpose and values.

I would like to thank our CEO and fantastic staff for their hard work and achievements over the year. Working together with our core values front and centre, reflecting our diverse community, moving with the times to remain relevant – just a few of the many attributes of this great organisation.

The next big challenge is our central City site development which will be a big focus for the team over the next few years so we can continue to invest in the next generation. We also look forward to opening a new accommodation facility in Blenheim early 2020.

## The Todd Foundation 4C Centre

### Curiosity, Communication, Creativity, Critical Thinking

I just wanted to pass on my gratitude for the 4C room / project that Joshua has access to there at the YMCA.

"It has been a real blessing and has allowed him to extend his natural gifts, curiosity and talent in ways that we could not have afforded ourselves. What an amazing gift it has been to have the use of such technology and resources and with the flexibility for him to come and go as necessary. We have seen him flourishing over the past weeks and we can only begin to imagine where it might take him in the future.

I guess you get to see a lot of what he is doing there but that spills over into his enthusiasm and hunger for knowledge in his home tech space.

While he uses the tech there to create things, at home he is researching, planning, programming, building and testing the electronics side of things. I am pretty tech minded but I must say most of what he is doing has left me in the dust and nodding and smiling as he explains it all to me with great enthusiasm."

**Parent of a member of the YMCA's 4C Centre.**



[www.ymcachch.org.nz](http://www.ymcachch.org.nz)



# Financial Performance

## Year Ended January 2019

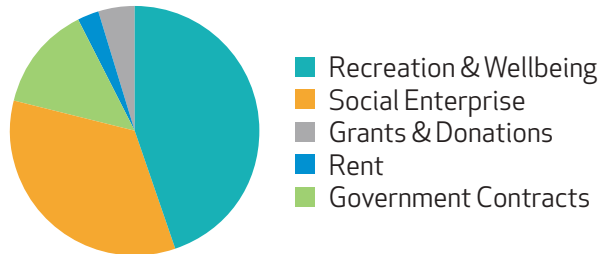
We finished the year with a surplus before depreciation of \$345,515, and balance sheet equity of \$8,182,607. It is not easy to create social good with the rising costs of doing business – rising costs of labour in particular impact on viability in sectors which are either highly competitive (health & fitness, accommodation), and increasing compliance impacts in others (education and outdoor activities).

Despite these challenges in 2018 we continued to invest in assets, such as refurbishments in accommodation, a transformational new technology centre for young people at the City Y, and a new café at our Bishopdale YMCA. We continue to think strategically about how to

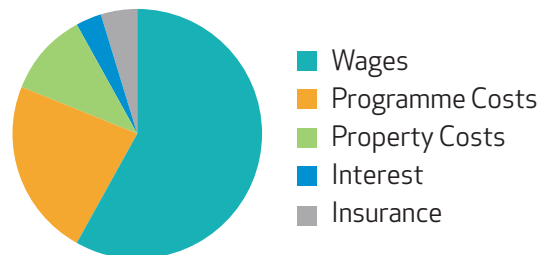
evolve our offering in a way which improves the overall financial sustainability without changing our DNA as an organisation. Looking forward this includes a new Y accommodation facility we will open in Blenheim in 2020, and via a \$25 million investment - developing our city site at Hereford Street so that our facilities mirror our great programmes and staff.

We couldn't achieve what we do without philanthropic support and for this we are particularly grateful. Large funders such as Todd and Rata Foundations, many smaller charitable funders, our sponsors and supporters who enable our events such as the Charity Golf Tournament, Carols By Candlelight and Y Factor.

### Income | \$7,276,638



### Expenses | \$6,931,123





## From the Chief Executive Officer

**Josie Ogden Schroeder**

### 'No Man is an Island'

*No man is an island entire of itself; every man is a piece of the continent, a part of the main; if a clod be washed away by the sea, Europe is the less, as well as if a promontory were, as well as any manner of thy friends or of thine own were; any man's death diminishes me, because I am involved in mankind. And therefore never send to know for whom the bell tolls; it tolls for thee.*

These words of John Donne written in 1624 perhaps resonating now more than ever in this age where communities are working out how to stay connected, how to support one another and what matters most when the world is facing epic exponential change. John Donne's poem resonates for me as a leader of a large number of staff, and an organisation that relies on the goodwill of

others. An organisation that is fundamentally about helping people be better, relate better, feel better. An organisation that should, if we are to be true to our mission and purpose, be brave in the face of important, significant issues that are impacting on humanity – because what hurts our neighbours hurts us too.

**Te Whakapono, Whakanuia te Tangata,  
Te Kawenga Atu, Atawhaitia**





Perhaps John Donne would have said that to diminish the voice of the young is to diminish hope for the future of mankind.

The YMCA is at its core about making the world a better place. As clichéd as it sounds, the future is in the hands of today's young people. And young people today, more than any other generation, are faced with enormous challenge and it is certainly the role of leadership to ensure that the voice of the young, the next generation of leaders, is part of the strategizing happening now. For it is their future at stake.

YMCA founder George Williams was concerned about young

people having control of their lives in 1844, so in that sense the world is the same. However, in many ways the world is not the same. United Nations General Secretary Ban Ki-Moon said "We are the first generation that can end poverty. We are also the last generation that can slow global warming before it is too late."

What the YMCA does is empower young people to be the next generation of amazing leaders. However we cannot do it on love and belief alone. To be successful we need to be efficient, viable, competitive

business entities in order to earn income to invest into the social causes we care about. To make a difference beyond our own brief involvement on this earth.

It's an ongoing struggle to get this balance right. I applaud the staff and volunteers at YMCA Christchurch – they have walked on two paths with determination and courage. The two paths are each complex in their own way – the one which is about bottom lines, viability, compliance... and

the other which is about meaning and making a difference to the world. Not many organisations do both as well as us.

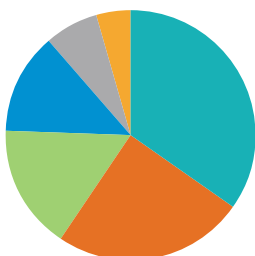
Josie

**He waka eke noa**

*A canoe which we are all in with no exception.*

## Total Participations

361,000+ per annum



- Fitness
- Accommodation/Conf/Theatre
- Family Events
- Preschool
- Adult Recreation
- Youth Development





# Honesty, Respect, Responsibility, Caring



## Youth Empowerment Our future leaders

A key aspect of our strategy to achieve our stated charitable purpose 'Investing in the Next Generation' is to advocate for young people. We invest in projects or enterprises which serve to enhance the lives of young people now, so that their futures are more successful. This is particularly true and poignant in relation to those young people in our community who are offered fewer opportunities than others due to poverty and inter-generational complex needs around education, employment and health and consequently have low personal aspirations and a bleak view of their own futures. Currently in the greater Christchurch area there are an estimated 2500 young people (under 18 years) not in employment, education or work. We also work with thousands of young people who are doing awesome things in their communities and schools. An amazing fact about the YMCA of Christchurch is that we currently deliver the most outdoor education to schools, children and young people of any other provider in the region. This is because we are lucky to have three amazing outdoor facilities which we use to maximise our positive impact through youth development. We have over 40,000 children and young

people visit our two camps and our city-based Adventure Centre each year – and we employ over fifty staff to lead and teach in these centres.

A protective factor for young people is that they have positive relationships with adults – and in particular older adults. Our Life Fit programme is at its heart about keeping our older adults happy, fit and healthy – so they can enjoy a full life in their retirement years and add to the lives of those younger in their families and in their communities. Our Life Fit programme is central to our purpose of investing in the next generation – we notice it most when young and older are exercising together – this is always a time of connection and meaning for both sides.

And we wouldn't be a YMCA if we failed to mention basketball – a game invented by a YMCA youth leader! We have hundreds of children involved in our basketball league and these children are developed into referees and coaches through their time at the Y. A key focus of our basketball training programmes and leagues is to ensure that young people have an opportunity for leadership in the sport, and that they understand that this is a great way to 'give back' to younger players following in their footsteps.



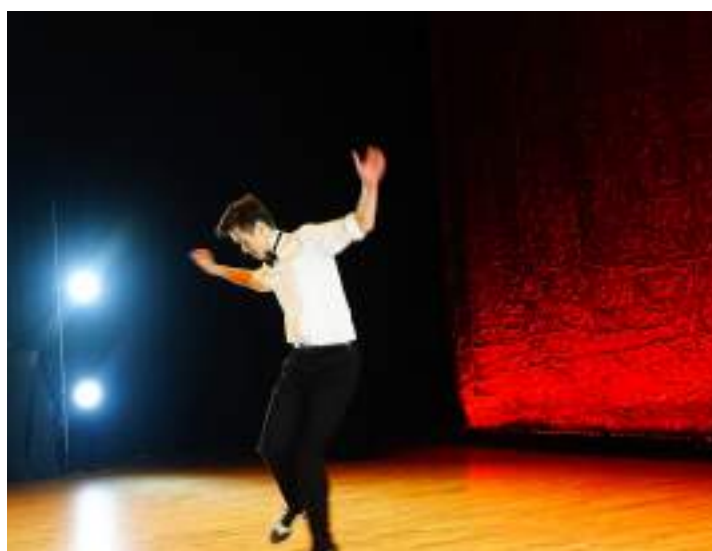
## Social Responsibility

### Creating game-changers

We've got a goal at the YMCA which is to revolutionize, disrupt, create a game-changer – that enables more young people to get a job.

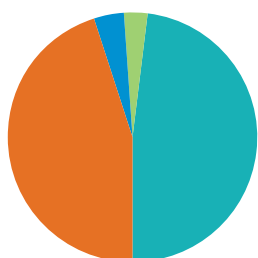
As employment is a key concern of young people the world over, and we know that employment is a critical enabler to success and happiness, we felt this would be a good place to put our energy. In consultation and collaboration with all the other youth agencies in Canterbury, we are on a mission to try, try and try again to figure out a way to address the BIG PROBLEM of youth unemployment and the uncertainty facing young people with rapid technological disruption.

We have three core strategies. The first we delivered in 2018 which was to create our 'free to access' technology hub for young people (the 4C Centre). The second is to work closely with other youth agencies and employers to broker work for young people in a way which is sustainable for both the employee and employer. And the third is to create a website for young people which provides advice 'for youth by youth' on all things related to choosing a career path, getting ready for an interview, making decisions about qualifications, starting up a business, taking a break from study to gain life experience and more.



## Volunteers

33,000+ hours per annum  
Estimated value \$657,450



- Children's Services
- Outdoor Education
- Recreation
- Governance



# Health & Wellbeing

## It starts really young at the YMCA.

It never ceases to amaze our team how much we can learn about wonder, about joy, and about hope, from our smallest Y participants. Health and wellbeing at its most basic is about being happy.

The Maori worldview, is that wellbeing is directly connected with nature – that everything living and non-living are interconnected, and that the people of a place have a responsibility to look after that place for future generations.

At our licensed preschool 'being happy' is a core component of the curriculum which incorporates a wide breadth of learning areas. In 2018 our preschool team began a journey with their little learners of re-imagining their outdoor play area - in order to reconnect the children to the natural world - and went so far as to involve the children in the planning. This involved wide eyes when large boulders were hefted over the fence by crane.

This involved great excitement when plastic was replaced with wood and rope. This involved giving very small children agency over their own environment – a rare thing in this world of heightened safety regulations and focus on compliance. Research shows that reconnecting children with nature helps to support their healthy development and also fosters

their lifelong commitment to caring for the earth itself. (As well as this we have observed that the activities our pre-schoolers enjoy the most are the ones involving mud and bugs!) There is a garden the children look after, pets, boulders to climb on, and wood to make huts with... it's pretty cool.



## Key Funders



**Christchurch City Council**



**NOELENE & DAVE DIGGS FOUNDATION**



**The Elizabeth Ball Charitable Trust**



**MAINLAND FOUNDATION**